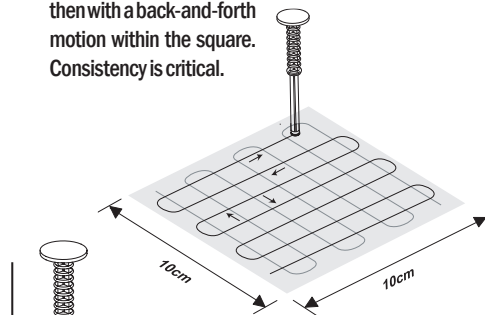
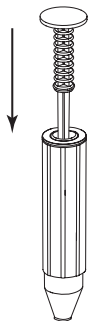


Surface Sampling

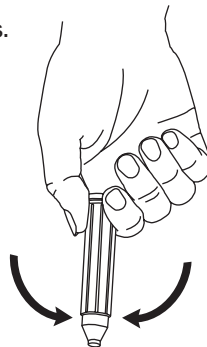
- 1** Turn the instrument on. Make sure it's at the main screen.
- 2** Select the correct site to be tested.
- 3** Sample your site by "drawing" a 4" X 4" square and then with a back-and-forth motion within the square. Consistency is critical.



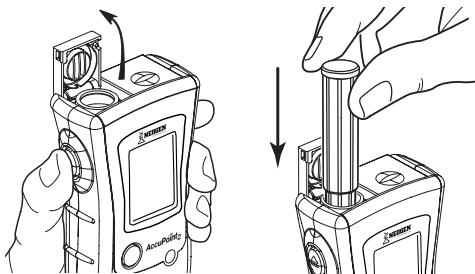
- 4** Hold the sampler vertically and fully depress to activate. Note: The sampler must be held vertically.



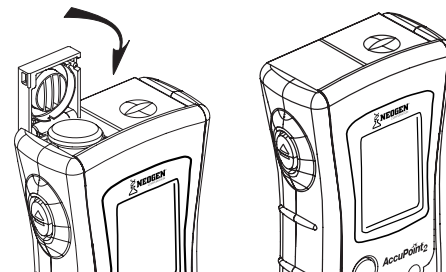
- 5** Mix for two seconds.



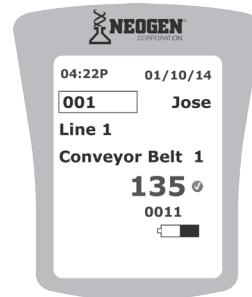
- 6** Press the eject button and insert the sampler into the instrument.



- 7** Depress the sampler all the way down and close the door.

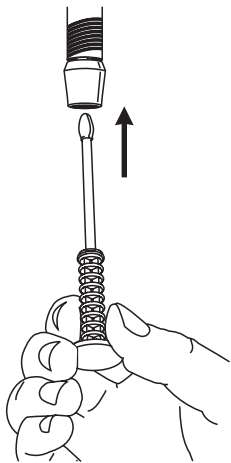


- 8** The RLU score will display along with a symbol for pass, marginal or fail.

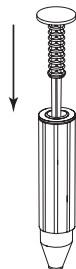
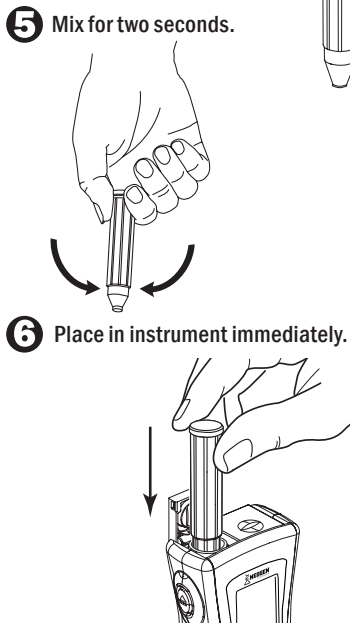


Access Sampler

- 1 Turn the instrument on. Make sure it's at the main screen.
- 2 Select the correct site to be tested.
- 3 Remove the Access sampler and take your sample.



- 4 Hold the sampler vertically and fully depress to activate. Note: The sampler must be held vertically.
- 5 Mix for two seconds.



Water Sampler

- 1 Turn the instrument on. Make sure it's at the main screen.
- 2 Select the correct site to be tested. A water droplet icon on the display indicates to use a water sampler.

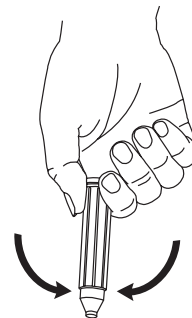


- 3 Take your sample by dipping the water sampler into the liquid.

- 4 Hold the sampler vertically and fully depress to activate. Note: The sampler must be held vertically.



- 5 Mix for two seconds.



- 6 Place in instrument immediately.

